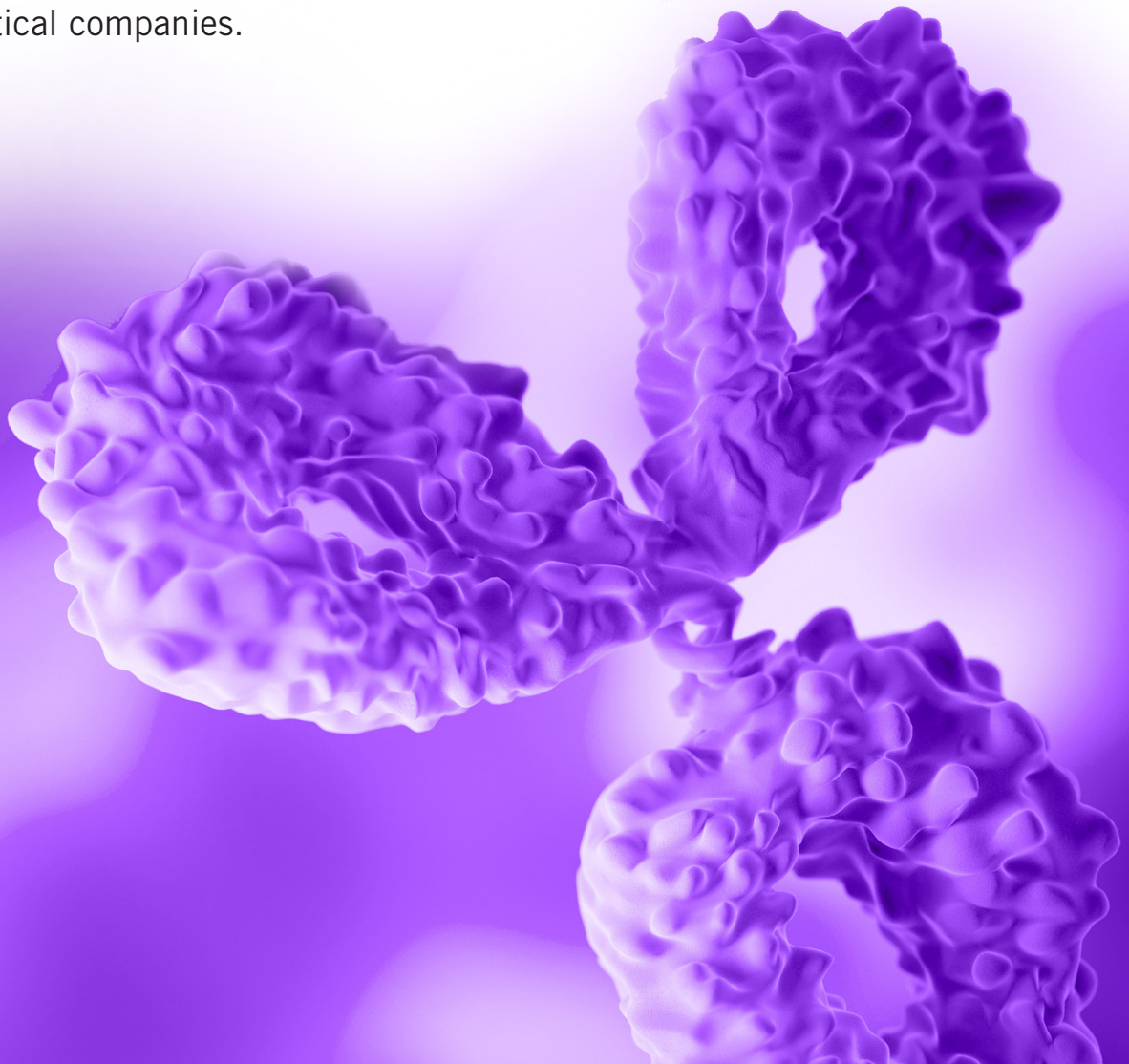


Global, Insightful, and Comprehensive Bioanalytical & Biomarker Services

Eurofins Bioanalytical Services is a biologics-focused, global leader in bioanalytical solutions providing over 20 years of industry-leading scientific expertise. We specialize in comprehensive PK/TK, ADA, NAb, biomarker assays and sample analysis for the world's largest pharmaceutical and biopharmaceutical companies.



Pharmacokinetics

- Clinical and preclinical PK/TK studies
- Therapeutic modality examples:
 - MAb
 - Biosimilars
 - Bispecifics and other multi-domain therapeutics
 - Cell therapies
 - Gene therapies
 - Fusion proteins

Immunogenicity

- Experience with multiple assay types including:
 - Bridging
 - Acid dissociation
 - ACE
 - SPEAD
- Advanced methodologies to address drug and target interference
- Cut-point calculation for all tiers
- Dedicated laboratory for cell-based NAb assays

Biomarkers

- Tailored approach for context of use
- Exploratory
 - Kit verification
 - Limited assay qualification
 - Full assay qualification
- Endpoint
 - Bioanalytical assay validation
 - CLIA capable
- Global flow cytometry capabilities to support multi-center studies
 - 8-color
 - High-parameter
- Single and multi-plex capabilities

qPCR

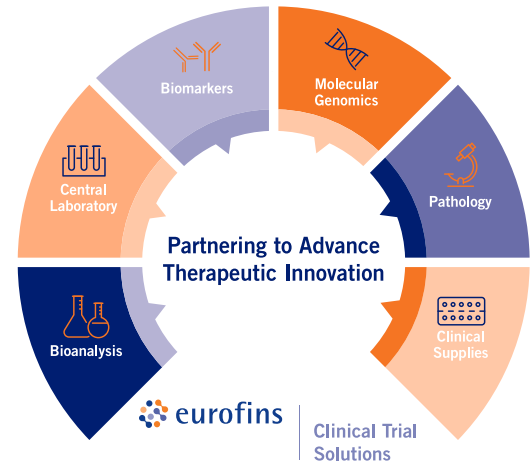
- Viral shedding
- Bio-distribution
- Gene expression studies
- Single nucleotide polymorphisms (SNP) genotyping
- Pathogen detection
- Various tissue processing/extraction methodologies
- PK/TK

Platforms

- Luminex®, Multi-mode Microplate Readers (Abs, FL, Lum, TRF), MSD®, Gyrolab™, ELISpot
- Flow cytometry: BD FACSCanto™ (8-color), Agilent NovoCyte Quanteon™ (25-color)
- qPCR: KingFisher™, QuantStudio™ 7 Flex



Enhancing lives, one assay at a time



About Eurofins Bioanalytical Services

Over 20 years of industry-leading global **scientific expertise** supporting the widest breadth of biologics' clinical trials with PK/TK, ADA, NAb and biomarker assays and sample analysis.

We deliver adaptable, high-quality support tailored to each sponsor's unique program—whether **clinical or pre-clinical, regulated or non-regulated**. From assay development or transfer through qualification or validation, our collaborative approach ensures assay performance aligns with study requirements. With flexible project management and a commitment to timelines, we ensure reliable data delivery throughout sample analysis.

Our laboratory facilities, located in St. Charles, MO, USA provide global reach through the **Eurofins Clinical Trial Solutions** network of companies, providing seamless end-to-end solutions for all phases of your clinical trials.

Contact us today to discover how we can make the difference in your projects.

